



Government of India  
Ministry of Earth Sciences  
India Meteorological Department



Press Release

Date: 06<sup>th</sup> July 2026

Time of Issue: 1350 hours IST

**Subject: (i) A Depression lay over south Jharkhand & adjoining north interior Odisha.**

**(ii) Monsoon conditions are likely to be in active phase over central parts of the country during next 3 days.**

**(iii) Isolated extremely heavy rainfall likely over Chhattisgarh and South Interior Karnataka on 06<sup>th</sup>; over Konkan and Gujarat State, Coastal Karnataka on 06<sup>th</sup> & 07<sup>th</sup>; over Madhya Maharashtra during 06<sup>th</sup> -08<sup>th</sup>; Sub-Himalayan West Bengal & Sikkim on 08<sup>th</sup> July.**

**Advance of Southwest Monsoon 2026 (Annexure I):**

- ❖ The **Northern Limit** of Monsoon continues to pass through 22°N/60°E, 22°N/65°E, Jamnagar, Udaipur, Ajmer, Jhunjhunu, Hisar, Bhatinda and 32.5°N/70°E.
- ❖ **Conditions are favourable** for further advance of southwest monsoon into some more parts of North Arabian Sea, Gujarat, remaining parts of Haryana & Punjab, and some more parts of Rajasthan during next 3 days.

**Realised weather during past 24 hours ending at 0830 hours IST of today, the 06<sup>th</sup> July, 2026:**

- ❖ **Extremely heavy rainfall ( $\geq 21$  cm)** has been recorded over Saurashtra, Konkan, Madhya Maharashtra and Odisha.
- ❖ **Very Heavy rainfall (12-20 cm)** has been recorded over Uttarakhand, Chhattisgarh, West Madhya Pradesh, Uttar Pradesh
- ❖ **Heavy rainfall (7-11 cm)** has been recorded over Himachal Pradesh, Vidarbha, West Bengal & Sikkim, East Rajasthan, East Madhya Pradesh, Vidarbha, Jharkhand, Assam and Manipur.
- ❖ **Thunderstorm accompanied with Squally/Gusty winds with speed reaching 60-80 kmph** Bihar, Madhya Maharashtra, Konkan & Goa, Tamil Nadu, Puducherry & Karaikal **with speed reaching 40-60 kmph** at isolated places over Andaman & Nicobar Islands, West Bengal & Sikkim, Odisha, Jharkhand, Haryana Chandigarh, East Uttar Pradesh, East Rajasthan, Madhya Pradesh, Marathawada

**Weather Systems, Forecast and Warnings (Annexure II & III):**

- ❖ Yesterday's **depression** over coastal areas of North Odisha & adjoining West Bengal lay over south Jharkhand & adjoining north interior Odisha at 0830 hrs IST of today, the 6<sup>th</sup> July 2026, near latitude 22.7°N and longitude 85.1°E, about 60 km north-northeast of Rourkela (Odisha), 70 km of south-southwest of Ranchi (Jharkhand), 100 km east-southeast of Jashpurnagar (Chhattisgarh) and 180 km southeast of Daltonganj (Jharkhand). It is very likely to move nearly northwestwards across Jharkhand, North Chhattisgarh and adjoining east Madhya Pradesh during next 24 hours.
- ❖ The **seasonal trough** is active and runs from southwest Rajasthan to eastcentral Bay of Bengal in lower tropospheric level.
- ❖ The **shear zone** runs along latitude 21°N between lower & middle tropospheric levels.
- ❖ The **off-shore trough** at mean sea level runs from south Gujarat to North Kerala coast.
- ❖ The **Western Disturbance** as a trough in middle & upper tropospheric westerlies with its axis in middle tropospheric level roughly along Long. 72°E to the north of Lat. 30°N.

**Under the influence of above systems, the following weather is likely:**

**Northwest India:**

- ❖ **Fairly Widespread to Widespread** rainfall likely over Himachal Pradesh, Jammu-Kashmir-Ladakh-Gilgit-Baltistan-Muzaffarabad and Uttarakhand during 6<sup>th</sup>-12<sup>th</sup> July.
- ❖ **Fairly Widespread to Widespread** rainfall likely over Punjab during 7<sup>th</sup>-9<sup>th</sup> July and during 11<sup>th</sup>-12<sup>th</sup> July; Haryana Chandigarh & Delhi during 7<sup>th</sup>-9<sup>th</sup> July; East Uttar Pradesh during 7<sup>th</sup>-12<sup>th</sup> July; East Rajasthan during 6<sup>th</sup>-9<sup>th</sup> July.

- ❖ **Isolated to Scattered** rainfall likely over Punjab on 6th July and on 10th July; Haryana Chandigarh & Delhi on 6th July and during 10th-12th July; West Rajasthan and West Uttar Pradesh during 6th-12th July; East Uttar Pradesh on 6th July; East Rajasthan during 10th-12th July.
- ❖ Isolated **thunderstorm, lightning & gusty winds (speed reaching 40-50 kmph gusting to 60 kmph)** likely over Jammu-Kashmir-Ladakh-Gilgit-Baltistan-Muzaffarabad during 6th-12th July.
- ❖ Isolated **thunderstorm, lightning & gusty winds (speed reaching 40-50 kmph gusting to 60 kmph)** likely over East Uttar Pradesh and West Uttar Pradesh during 6th-7th July; West Rajasthan during 6th-9th July; East Rajasthan during 6th-10th July.
- ❖ Isolated **thunderstorm & lightning** likely over Uttarakhand during 6th-12th July.
- ❖ Isolated **heavy rainfall** likely over Jammu-Kashmir-Ladakh-Gilgit-Baltistan-Muzaffarabad during 6th-8th July and on 11th July; Himachal Pradesh during 8th-12th July; Uttarakhand and West Uttar Pradesh during 7th-12th July; Haryana Chandigarh & Delhi and Punjab during 6th-9th July and during 11th-12th July; East Uttar Pradesh on 6th July, on 9th July and on 12th July; West Rajasthan during 7th-8th July; East Rajasthan on 10th July with isolated **very heavy rainfall** also likely over Himachal Pradesh during 6th-7th July; Uttarakhand on 6th July; East Uttar Pradesh during 10th-11th July; East Rajasthan during 6th-9th July.

#### Central India:

- ❖ **Fairly Widespread to Widespread** rainfall likely over West Madhya Pradesh during 6th-9th July; East Madhya Pradesh during 6th-10th July; Vidarbha during 6th-8th July; Chhattisgarh during 6th-7th July and on 12th July.
- ❖ **Isolated to Scattered** rainfall likely over West Madhya Pradesh during 10th-12th July; East Madhya Pradesh during 11th-12th July; Vidarbha during 9th-12th July; Chhattisgarh during 8th-11th July.
- ❖ Isolated **thunderstorm & lightning** likely over East Madhya Pradesh and West Madhya Pradesh during 6th-10th July; Chhattisgarh and Vidarbha during 6th-7th July.
- ❖ Isolated **heavy rainfall** likely over East Madhya Pradesh and West Madhya Pradesh during 9th-10th July; Vidarbha on 8th July; Chhattisgarh on 6th July and on 8th July with isolated **very heavy rainfall** also likely over East Madhya Pradesh and West Madhya Pradesh during 6th-8th July; Vidarbha during 6th-7th July; Chhattisgarh on 7th July.
- ❖ **Heavy to very heavy rainfall with extremely heavy rainfall likely at isolated places over Chhattisgarh on 06<sup>th</sup> July.**

#### East India:

- ❖ **Isolated to Scattered** rainfall likely over Andaman & Nicobar Islands during 6th-8th July; Bihar and Odisha during 6th-9th July and during 11th-12th July.
- ❖ **Fairly Widespread to Widespread** rainfall likely over Andaman & Nicobar Islands during 9th-12th July; Gangetic West Bengal, Jharkhand and Sub-Himalayan West Bengal & Sikkim during 6th-12th July; Bihar and Odisha on 10th July.
- ❖ Isolated **thunderstorm, lightning & gusty winds (speed reaching 40-50 kmph gusting to 60 kmph)** likely over Andaman & Nicobar Islands and Gangetic West Bengal during 6th-7th July; Jharkhand during 6th-10th July; Bihar on 7th July, **with gusty winds (speed reaching 30-40 kmph gusting to 50 kmph)** likely over Andaman & Nicobar Islands and Gangetic West Bengal during 8th-12th July; Bihar on 6th July and during 8th-12th July.
- ❖ Isolated **heavy rainfall** likely over Sub-Himalayan West Bengal & Sikkim on 6th July, on 8th July and during 10th-12th July; Gangetic West Bengal on 6th July and on 10th July; Jharkhand during 7th-8th July; Bihar during 9th-12th July; Odisha on 7th July with isolated **very heavy rainfall** also likely over Sub-Himalayan West Bengal & Sikkim on 7th July and on 9th July; Jharkhand and Odisha on 6th July; Bihar during 7th-8th July.
- ❖ Strong Surface Winds likely over Andaman & Nicobar Islands during 6th-12th July.
- ❖ **Heavy to very heavy rainfall with extremely heavy rainfall likely at isolated places over Sub-Himalayan West Bengal & Sikkim on 08<sup>th</sup> July.**

#### West India:

- ❖ **Fairly Widespread to Widespread** rainfall likely over Konkan & Goa during 6th-12th July; Madhya Maharashtra during 6th-8th July; Marathawada and Saurashtra & Kutch during 6th-7th July; Gujarat Region during 6th-9th July.
- ❖ **Isolated to Scattered** rainfall likely over Madhya Maharashtra during 9th-12th July; Marathawada and Saurashtra & Kutch during 8th-12th July; Gujarat Region during 10th-12th July.
- ❖ Isolated **heavy rainfall** likely over Gujarat Region and Konkan & Goa during 6th-7th July and on 9th July; Madhya Maharashtra during 6th-9th July; Marathawada on 6th July; Saurashtra & Kutch during 6th-8th July with isolated **very heavy rainfall** also likely over Gujarat Region and Konkan & Goa on 8th July.
- ❖ **Heavy to very heavy rainfall with extremely heavy rainfall likely at isolated places over Konkan and Gujarat State on 06<sup>th</sup> & 07<sup>th</sup>; over Madhya Maharashtra during 06<sup>th</sup> -08<sup>th</sup> July.**

#### Northeast India:

- ❖ **Isolated to Scattered** rainfall likely over Arunachal Pradesh on 6th July.

- ❖ **Fairly Widespread to Widespread** rainfall likely over Arunachal Pradesh during 7th-12th July; Assam & Meghalaya and Nagaland, Manipur, Mizoram & Tripura during 6th-12th July.
- ❖ Isolated **thunderstorm & lightning** likely over Arunachal Pradesh, Assam & Meghalaya and Nagaland, Manipur, Mizoram & Tripura during 6th-10th July.
- ❖ Isolated **heavy rainfall** likely over Arunachal Pradesh on 6th July and during 10th-12th July; Assam & Meghalaya during 6th-7th July and during 9th-12th July; Nagaland, Manipur, Mizoram & Tripura during 6th-10th July with isolated **very heavy rainfall** also likely over Arunachal Pradesh during 7th-9th July; Assam & Meghalaya on 8th July.

#### South Peninsular India:

- ❖ **Isolated to Scattered** rainfall likely over Coastal Andhra Pradesh & Yanam, North Interior Karnataka, Rayalaseema, South Interior Karnataka, Tamil Nadu, Puducherry & Karaikal and Telangana during 6th-12th July; Kerala & Mahe on 12th July; Lakshadweep on 6th July and during 9th-12th July.
- ❖ **Fairly Widespread to Widespread** rainfall likely over Kerala & Mahe during 6th-11th July; Lakshadweep during 7th-8th July; Coastal Karnataka during 6th-12th July.
- ❖ Isolated **thunderstorm, lightning & gusty winds (speed reaching 40-50 kmph gusting to 60 kmph)** likely over Coastal Karnataka, North Interior Karnataka and South Interior Karnataka during 8th-10th July; Coastal Andhra Pradesh & Yanam during 6th-12th July; Rayalaseema during 6th-10th July; Telangana during 8th-12th July, **with gusty winds (speed reaching 30-40 kmph gusting to 50 kmph)** likely over Coastal Karnataka, North Interior Karnataka and South Interior Karnataka during 11th-12th July.
- ❖ Isolated **heavy rainfall** likely over Kerala & Mahe during 7th-8th July; Coastal Karnataka during 6th-7th July and during 9th-11th July; North Interior Karnataka on 8th July; South Interior Karnataka on 6th July and on 9th July with isolated **very heavy rainfall** also likely over Kerala & Mahe on 6th July; Coastal Karnataka on 8th July; North Interior Karnataka during 6th-7th July; South Interior Karnataka during 7th-8th July.
- ❖ **Thundersquall (wind speed reaching 50-60 kmph gusting to 70 kmph)** likely over Coastal Karnataka, North Interior Karnataka, South Interior Karnataka and Telangana during 6th-7th July.
- ❖ Strong Surface Winds likely over Coastal Andhra Pradesh & Yanam, Coastal Karnataka, North Interior Karnataka and Telangana during 6th-12th July; Rayalaseema during 6th-10th July.
- ❖ **Heavy to very heavy rainfall with extremely heavy rainfall likely at isolated places over Coastal Karnataka on 06<sup>th</sup> & 07<sup>th</sup>; over South Interior Karnataka on 06<sup>th</sup> July.**

#### Wind Warning:

- ❖ Squally wind speed reaching 40-50 kmph gusting to 60 kmph is likely to prevail over northwest Bay of Bengal, along & off north Odisha-West Bengal coasts till evening of 6th July. Thereafter, it is likely to decrease gradually over the same region becoming 35-45 kmph gusting to 55 kmph till 7th July.
- ❖ Squally wind speed reaching 35-45 kmph gusting to 55 kmph is likely to prevail over central and northeast Bay of Bengal till evening of 6th July.
- ❖ Squally wind speed reaching 35-45 kmph gusting to 55 kmph is likely to prevail over south Jharkhand & adjoining north interior Odisha and north Chhattisgarh till morning of 7th July and decrease gradually thereafter.

#### Sea Condition:

- ❖ **Sea condition is very likely to be rough** over northwest Bay of Bengal, along & off north Odisha-West Bengal coasts till 7<sup>th</sup> July and improve gradually thereafter.
- ❖ **Sea condition is very likely to be moderate to rough** over central and northeast Bay of Bengal till 7<sup>th</sup> July and improve gradually thereafter.

#### Fishermen Warning:

- ❖ Fishermen are advised not to venture into northwest Bay of Bengal, along & off Odisha, and West Bengal coasts till 7<sup>th</sup> July.
- ❖ Fishermen are advised not to venture into central and northeast Bay of Bengal till 7<sup>th</sup> July 2026.

#### Weather conditions and forecast over Delhi/NCR during next 4 days (Annexure IV)

For more details, kindly refer National Weather Bulletin:

[https://mausam.imd.gov.in/responsive/all\\_india\\_forecast\\_bulletin.php](https://mausam.imd.gov.in/responsive/all_india_forecast_bulletin.php)

For District wise warnings refer: <https://mausam.imd.gov.in/responsive/districtWiseWarningGIS.php>

For Fishermen warning refer <https://rsmcnewdelhi.imd.gov.in/fishermenwarning.php>

#### Significant rainfall recorded (in cm) (from 0830 hours IST of yesterday to 0830 hours IST of today):

- ❖ **Madhya Maharashtra** : Lonavala 67, Mahabaleshwar (Satara) 51

- ❖ **Odisha:** Sonepur 33
- ❖ **Konkan:** Dapoli (Ratnagiri) 33, Santacruz 16
- ❖ **Saurashtra & Kutch:** Amreli (Khambha) 20
- ❖ **Uttarakhand:** Loharkhet 14
- ❖ **Chhattisgarh:** Gariyaband 19
- ❖ **West Madhya Pradesh:** BHIND 13
- ❖ **West Uttar Pradesh:** Rath (Hamirpur) 12
- ❖ **East Uttar Pradesh:** Chunar (Mirzapur) 12
- ❖ **Gangetic West Bengal:** Harinkhola 11
- ❖ **East Madhya Pradesh:** Dindori 10
- ❖ **Sub-Himalayan West Bengal & Sikkim:** Lava 10
- ❖ **Himachal Pradesh:** Jogindernagar 10
- ❖ **Vidarbha:** GONDIA 7
- ❖ **West Madhya Pradesh:** 134.0 mm at ROAN in BHIND
- ❖ **Jharkhand:** MAJHGAON - 67.6 mm
- ❖ **East Rajasthan:** Madhorajpura (Jaipur) 8
- ❖ **Coastal Karnataka:** Siddapura (Dist Udupi) 13, Dharmasthala (Dist Dakshina Kannada) 7,
- ❖ **North Interior Karnataka:** Londa (Dist Belagavi) 13,
- ❖ **South Interior Karnataka:** Kammardi (Dist Chikkamagaluru) 13, Kottigehara (Dist Chikkamagaluru) 10,
- ❖ **Assam:** Gharmura 9
- ❖ **Manipur:** Chandel Kvk Aws 8

**Gusty winds (in  $\geq 40$  kmph) (from 0830 hours IST of yesterday to 0830 hours IST of today):**

- ❖ **Bihar:** Patna - 78
- ❖ **Konkan & Goa:** Santacruz (Mumbai) - 70; Dapoli(Ratnagiri) - 57
- ❖ **Tamil Nadu, Puducherry & Karaikal:** Vedasandur( Dindigul) - 68; Thiruchendur( Thoothukudi) - 59; Isro( Tiruchirappalli) - 59; Kovilpatti( Thoothukudi) - 57; Namakkal - 57; Ariyalur - 56; Hosur( Krishnagiri) - 52; Isro( Madurai) - 50; Kannivadi( Dindigul) - 50; Mailam( Viluppuram) - 50; Mayiladuthurai - 48; Amfu - 48; Amfu( Kanyakumari) - 46; Isro - 46; Ranipet - 46; Karaikal - 46; Virudhunagar - 44; KVK( Ramanathapuram) - 44; Madhavaram(Chennai) - 43; Port(Chennai) - 43; KVK( Virudhunagar) - 41; Tiruvarur - 41; Nilgiris) - 41
- ❖ **Madhya Maharashtra:** Mahabaleshwar (Satara) - 65; Radhanagri (Kolhapur) - 59; Karad (Satara) - 56
- ❖ **East Rajasthan:** Jaipur - 59; Dabok - 44; Pratapgarh - 43
- ❖ **West Madhya Pradesh:** Bhind - 57; Sehore - 57; Morena - 46; Datia - 44; Indore - 37; Gwalior - 37; Agar - 37; Burhanpur - 35; Shivpuri - 31; Ashoknagar - 31; Guna - 30
- ❖ **East Madhya Pradesh:** Sidhi - 57; Jabalpur - 47; Rewa - 41; Sagar - 37; Seoni - 35; Sagar - 33; Chhindwara - 30; Tikamgarh - 30
- ❖ **Marathwada:** Vaijnath (Beed) - 57; Ambejogai (Beed) - 52
- ❖ **East Uttar Pradesh:** Lucknow(AWS) - 54; Varanasi(Ap) - 50; Prayagraj - 46; Fursatganj - 41; Raebareilly(AWS) - 41; Hamirpur(AWS) - 41; Kanpur(IAF) - 35
- ❖ **Andaman & Nicobar Islands:** Sri Vijayapuram - 53
- ❖ **Odisha:** Puri - 52
- ❖ **Haryana, Chandigarh:** Karnal - 52; Rohtak - 39
- ❖ **Jharkhand:** Giridih - 44
- ❖ **Gangetic West Bengal:** Kalna - 43
- ❖ **Sub-Himalaya West Bengal & Sikkim:** Majhian - 43
- ❖ **Uttarakhand:** Chamoli - 39; Jollygrant - 37; Pantnagar - 33
- ❖ **Chhattisgarh:** Bilaspur - 37; Dhamtari - 37; Raipur - 35
- ❖ **West Uttar Pradesh:** Hindon(IAF) - 33

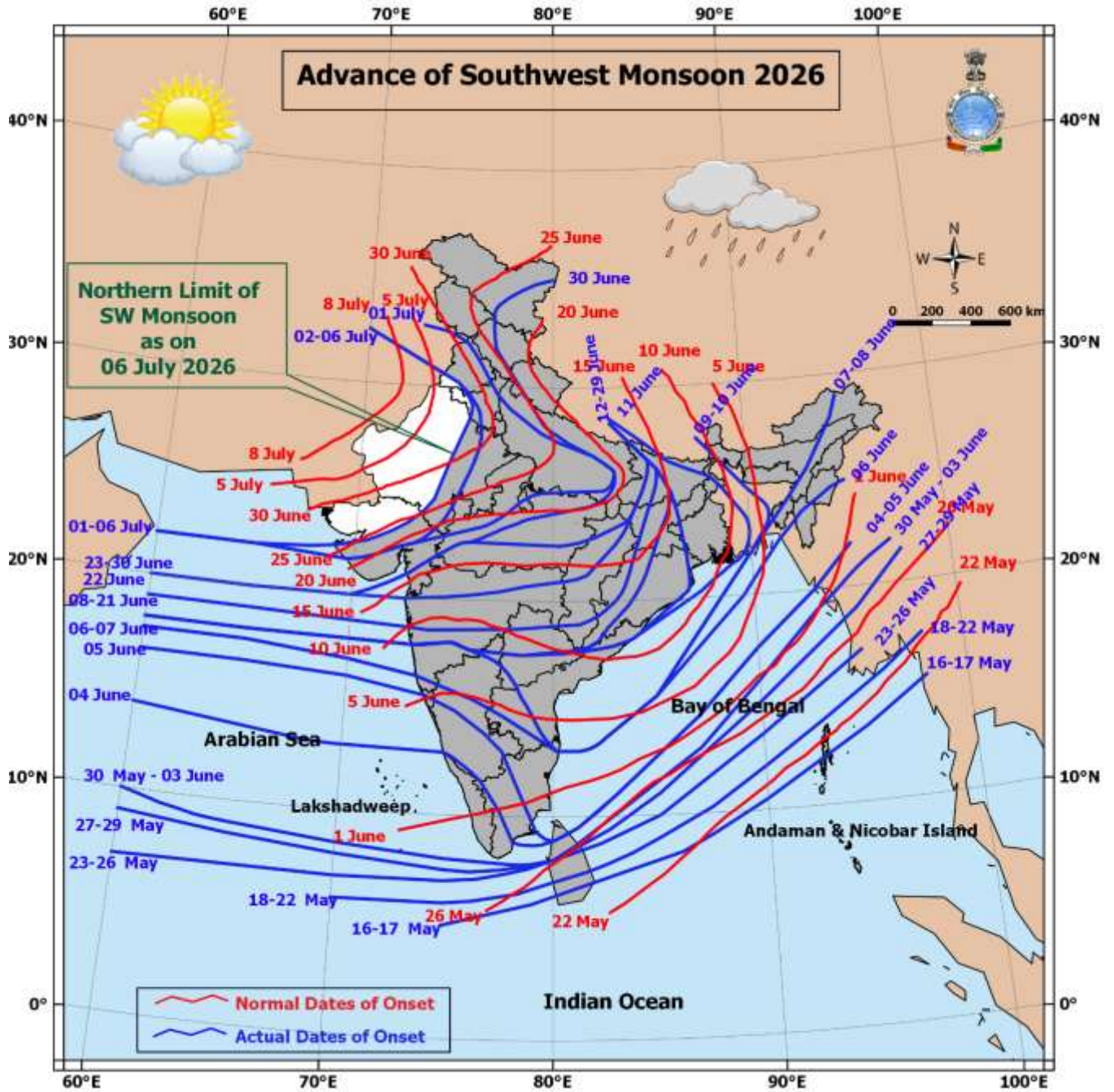
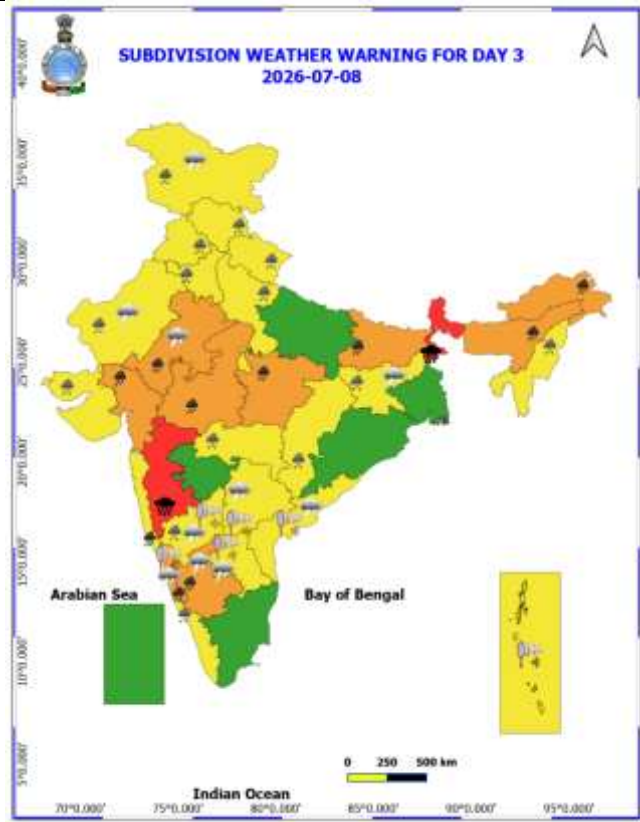
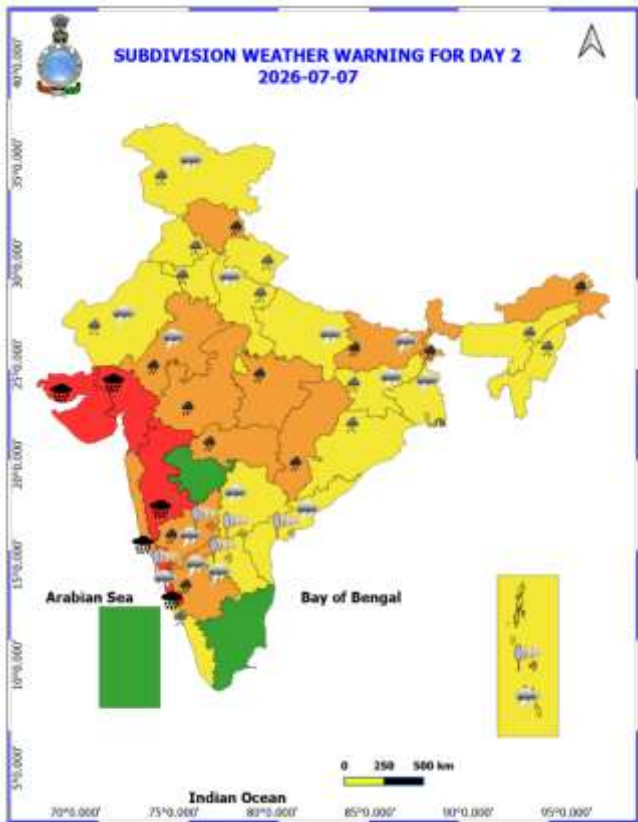
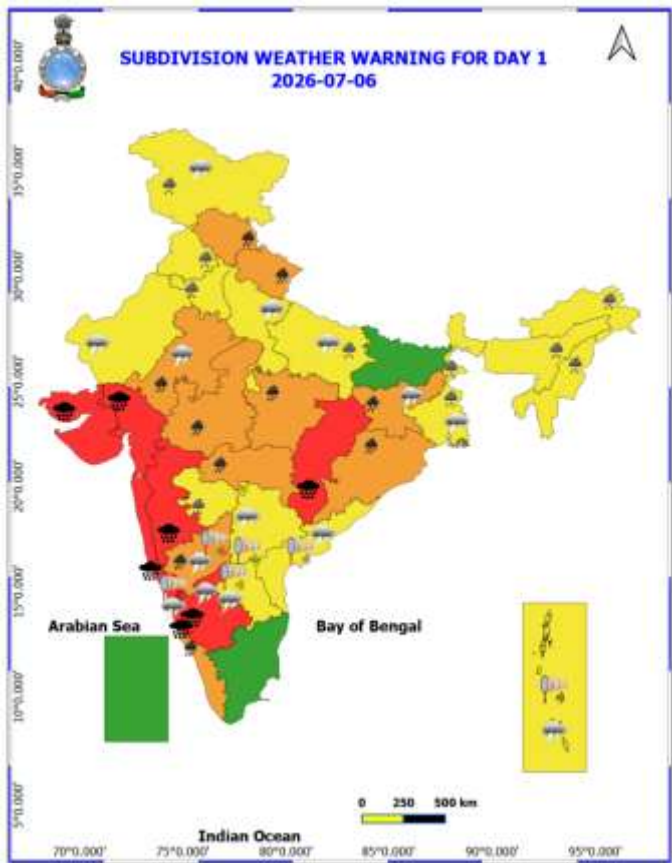
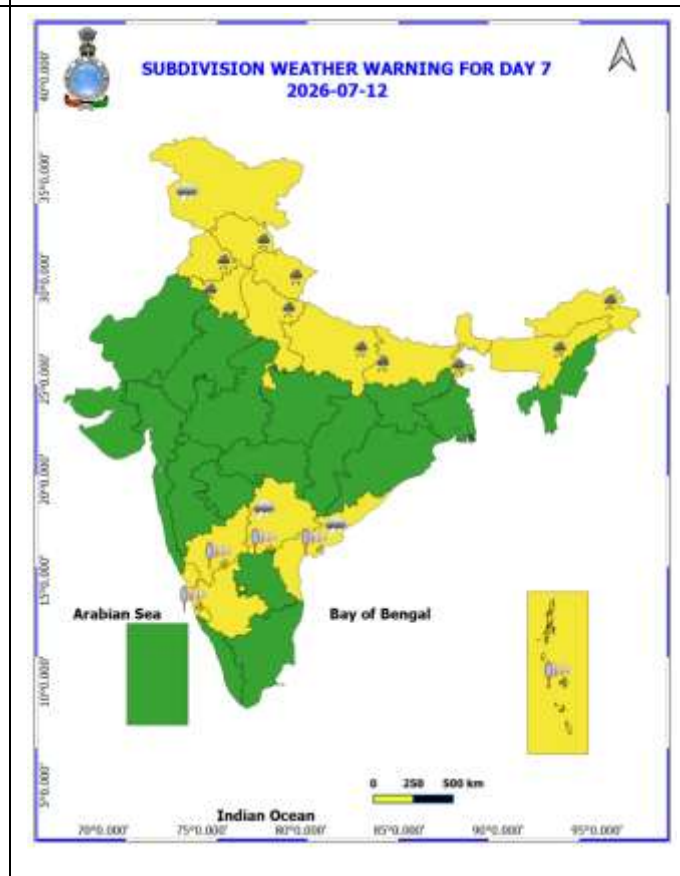
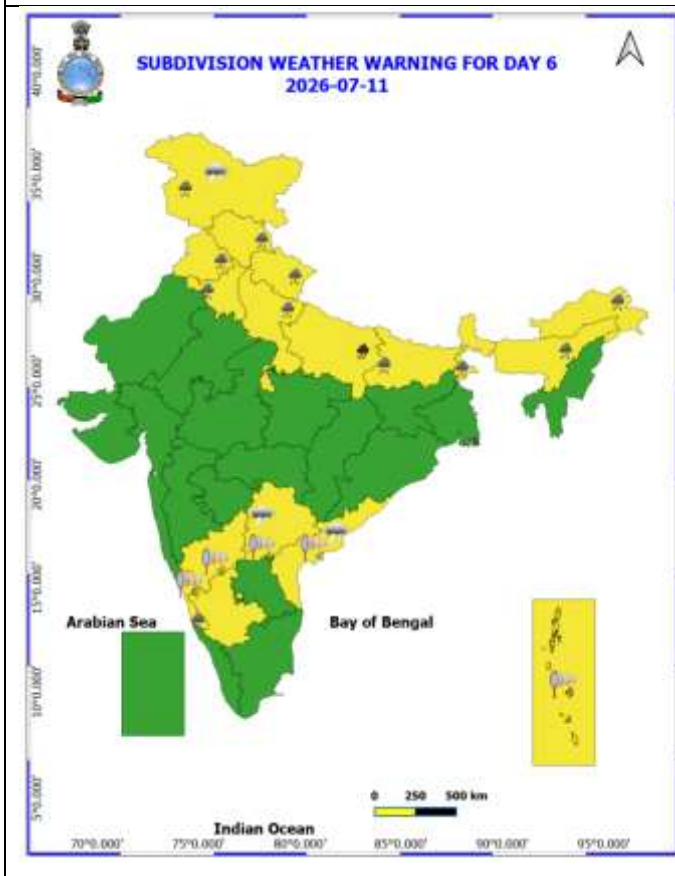
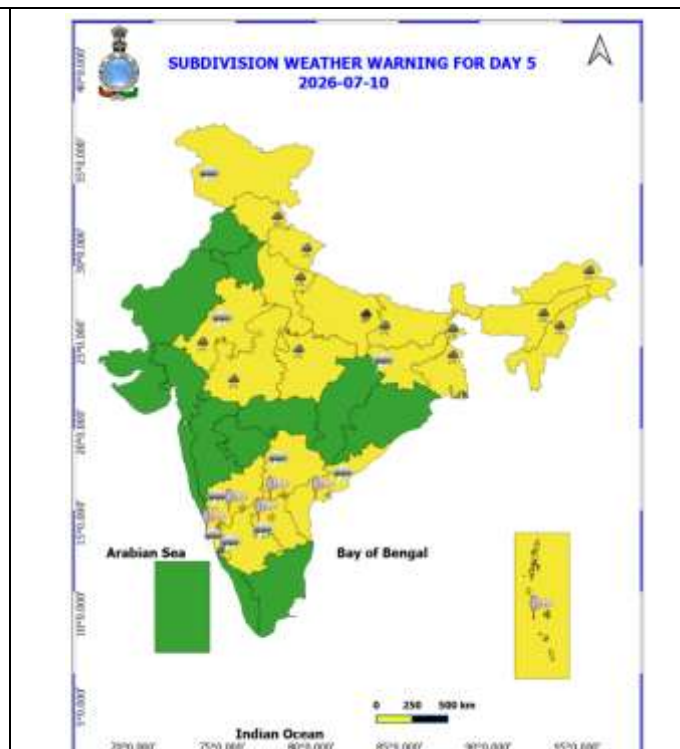
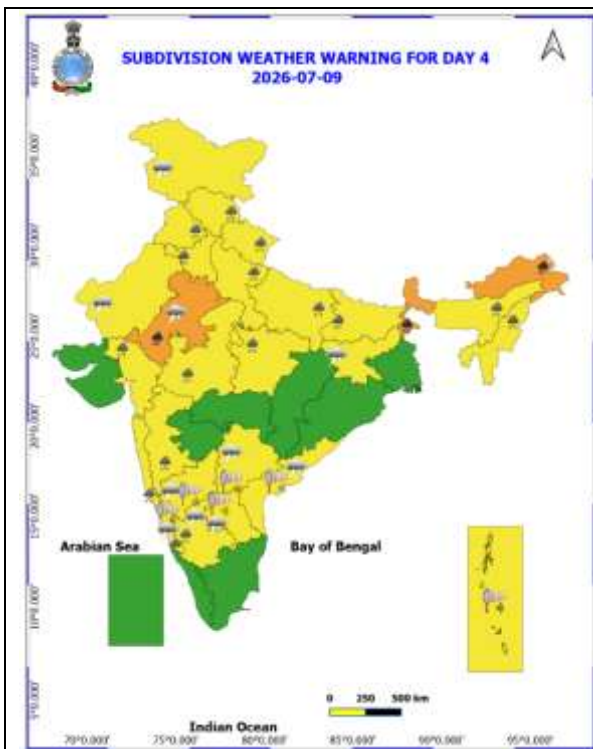


Table-1								
7 Days Rainfall Forecast								
S.No.	Subdivision	6- Jul	7- Jul	8- Jul	9- Jul	10- Jul	11- Jul	12- Jul
		Day 1	Day 2	Day 3	Day 4	Day 5	Day 6	Day 7
1	ANDAMAN & NICOBAR ISLANDS	SCT	SCT	SCT	FWS	FWS	FWS	FWS
2	ARUNACHAL PRADESH	SCT	FWS	FWS	FWS	FWS	FWS	FWS
3	ASSAM & MEHGHALAYA	FWS	FWS	FWS	FWS	FWS	FWS	FWS
4	NAGALAND, MANIPUR, MIZORAM AND TRIPURA	FWS	FWS	FWS	FWS	FWS	FWS	FWS
5	SUB HIMALAYAN WEST BENGAL & SIKKIM	FWS	FWS	FWS	FWS	FWS	FWS	FWS
6	GANGETIC WEST BENGAL	FWS	FWS	FWS	FWS	FWS	FWS	FWS
7	ODISHA	SCT	SCT	SCT	SCT	FWS	SCT	SCT
8	JHARKHAND	FWS	FWS	FWS	FWS	FWS	FWS	FWS
9	BIHAR	SCT	SCT	SCT	SCT	FWS	SCT	SCT
10	EAST UTTAR PRADESH	SCT	FWS	FWS	FWS	FWS	FWS	FWS
11	WEST UTTAR PRADESH	ISOL	SCT	SCT	SCT	ISOL	ISOL	ISOL
12	UTTARAKHAND	FWS	FWS	FWS	FWS	FWS	FWS	FWS
13	HARYANA, CHANDIGARH & DELHI	SCT	FWS	FWS	FWS	SCT	SCT	SCT
14	PUNJAB	SCT	FWS	FWS	FWS	SCT	FWS	FWS
15	HIMACHAL PRADESH	FWS	FWS	FWS	FWS	FWS	FWS	FWS
16	JAMMU AND KASHMIR AND LADAKH	FWS	FWS	FWS	FWS	FWS	FWS	FWS
17	WEST RAJASTHAN	ISOL	SCT	SCT	SCT	ISOL	ISOL	ISOL
18	EAST RAJASTHAN	FWS	FWS	FWS	FWS	SCT	SCT	ISOL
19	WEST MADHYA PRADESH	FWS	FWS	FWS	FWS	SCT	ISOL	ISOL
20	EAST MADHYA PRADESH	FWS	FWS	FWS	FWS	FWS	SCT	SCT
21	GUJRAT REGION	FWS	FWS	SCT	FWS	SCT	SCT	SCT
22	SAURASHTRA & KUTCH	FWS	FWS	SCT	SCT	SCT	ISOL	ISOL
23	KONKAN & GOA	FWS	FWS	FWS	FWS	FWS	FWS	FWS
24	MADHYA MAHARASHTRA	FWS	FWS	FWS	SCT	SCT	SCT	SCT
25	MARATHWADA	FWS	FWS	SCT	ISOL	ISOL	ISOL	ISOL
26	VIDARBHA	FWS	FWS	FWS	SCT	SCT	SCT	SCT
27	CHHATTISGARH	FWS	FWS	SCT	SCT	SCT	SCT	FWS
28	COASTAL ANDHRA PRADESH	SCT	SCT	SCT	SCT	ISOL	ISOL	ISOL
29	TELANGANA	SCT	ISOL	ISOL	ISOL	ISOL	ISOL	ISOL
30	RAYALASEEMA	ISOL	ISOL	ISOL	ISOL	ISOL	ISOL	ISOL
31	TAMILNADU & PUDUCHERRY	ISOL	ISOL	ISOL	ISOL	ISOL	ISOL	ISOL
32	COSTAL KARNATAKA	FWS	FWS	FWS	FWS	FWS	FWS	FWS
33	NORTH INTERIOR KARNATAKA	SCT	SCT	SCT	SCT	ISOL	ISOL	ISOL
34	SOUTH INTERIOR KARNATAKA	SCT	SCT	SCT	SCT	ISOL	ISOL	ISOL
35	KERALA AND MAHE	FWS	FWS	FWS	FWS	FWS	FWS	SCT
36	LAKSHADWEEP	SCT	FWS	FWS	SCT	SCT	SCT	SCT

- As the lead period increases forecast accuracy decrease.





- Action may be taken based on ORANGE AND REDCOLOUR warnings.
- Vulnerable regions likely urban and hilly areas action may be initiated for heavy rainfall warning.
- As the lead period increases forecast accuracy decreases.

Detailed district-wise Multi-Hazard weather warning for next five days available at <https://mausam.imd.gov.in/responsive/districtWiseWarningGIS.php>

## Weather forecast over Delhi/NCR during 06<sup>th</sup> to 09<sup>th</sup> July 2026

### Past Weather:

There has been rise in maximum temperatures by 1-2°C and fall in minimum temperatures by 1-2°C over Delhi during past 24 hours. The maximum temperatures were found 36-39 °C and the minimum temperatures are in the range 24-27°C respectively during past 24 hours over Delhi. The minimum temperatures are below normal (-1.6°C to -3.0°C) at a few places, and near normal (-1.5°C to - 1.5°C) over remaining parts of Delhi. The maximum temperatures were above normal (1.6°C to 3.0°C) at a few places and near normal (-1.5°C to - 1.5°C) over remaining parts of Delhi. Generally cloudy sky with surface wind speed 20 kmph gusting to 37 kmph from the southeast direction prevailed over Delhi during past 24 hours. Very light to light rain occurred at many places with moderate rain at a few places over Delhi during past 24 hours. Generally cloudy sky with surface wind speeds up to 15 kmph likely to prevailed from the southeast direction over the region in the forenoon today.

### Weather Forecast:

**06.07.2026:** Generally cloudy sky. A spell of very light to light rain at many places with moderate rain at isolated places accompanied with thunderstorm/lightning/strong winds speed reaching 30-40 kmph gusting to 50 kmph towards afternoon/evening. Another spell of very light to light rain at a few places accompanied with thunderstorm/lightning/strong winds speed reaching 30-40 kmph gusting to 50 kmph towards night. The maximum temperatures over Delhi are likely to be in the range of 36-38°C. The maximum temperatures will be normal (-1.5°C to - 1.5°C) at most places over Delhi. The predominant surface wind is likely to be from the southeast direction with surface wind speed reaching up to 15 kmph during the afternoon hours. The wind speed will increase becoming up to 20 kmph from the southeast direction during evening and night.

**07.07.2026:** Generally cloudy sky. A spell of very light to light rain at many places with moderate rain at isolated places accompanied with thunderstorm/lightning/strong winds speed reaching 30-40 kmph gusting to 50 kmph towards morning/forenoon. Another spell of very light to light rain at many places with moderate rain at isolated places accompanied with thunderstorm/lightning/strong winds speed reaching 30-40 kmph gusting to 50 kmph towards afternoon/evening. The maximum and minimum temperatures over Delhi are likely to be in the range of 35°C to 37°C and 26°C to 28°C, respectively. The minimum temperature will be normal (-1.5°C to 1.5°C) at most places, and the maximum temperatures will be near normal (-1.5°C to 1.5°C) at most places over Delhi. The predominant surface wind is likely to be from southeast direction with surface wind speed reaching up to 20 kmph during the morning hours. The wind speed will increase becoming up to 22 kmph from the southeast direction during the afternoon. The wind speed will decrease becoming up to 20 kmph from the southeast direction during evening and night.

**08.07.2026:** Generally cloudy sky. Possibility of very light to light rain accompanied with thunderstorm/lightning towards forenoon/afternoon. The maximum and minimum temperatures over Delhi are likely to be in the range of 34°C to 36°C and 24°C to 26°C, respectively. The minimum temperature will be below normal (-1.6°C to -3.0°C) at most places, and the maximum temperatures will be below normal (-1.6°C to -3.0°C) at most places over Delhi. The predominant surface wind is likely to be from southeast direction with surface wind speed reaching up to 20 kmph during the morning hours. The wind speed will increase becoming up to 22 kmph from the southeast direction during the afternoon. The wind speed will decrease becoming up to 20 kmph from the southeast direction during evening and night.

**09.07.2026:** Generally cloudy sky. Possibility of very light to light rain/thunderstorm/lightning towards forenoon/afternoon. The maximum and minimum temperatures over Delhi are likely to be in the range of 35°C to 37°C and 23°C to 25°C, respectively. The minimum temperature will be appreciably below normal (-3.1°C to -5.0°C) at most places, and maximum temperatures will be near normal (-1.6°C to 1.6°C) at most places over Delhi. The predominant surface wind is likely to be from the southeast direction with wind reaching up to 20 kmph during the morning hours. The surface wind speed will increase becoming up to 22 kmph from the southeast direction during the afternoon. The wind speed will decrease up to 15 kmph from the southeast direction during evening and night.

## Impact Expected & Action Suggested due to heavy/very heavy/ Extremely rainfall over

- ❖ Heavy to very heavy rainfall with extremely heavy rainfall likely at isolated places over Chhattisgarh & South Interior Karnataka on 06<sup>th</sup>; over Sub-Himalayan West Bengal & Sikkim on 08<sup>th</sup>; over Coastal Karnataka, Konkan and Gujarat State on 06<sup>th</sup> & 07<sup>th</sup>; over Madhya Maharashtra during 06<sup>th</sup> -08<sup>th</sup> July.
- ❖ Heavy to very heavy rainfall over parts of Northwest India, Central and East India today.

### Impact Expected

- Localized Flooding of roads, water logging in low lying areas and closure of underpasses mainly in urban areas.
- Occasional reduction in visibility due to heavy rainfall.
- Disruption of traffic in major cities due to water logging in roads leading to increased travel time.
- Minor damage to kutchha roads.
- Possibilities of damage to vulnerable structure.
- Localized Landslides/Mudslides/landslips/mudslips/landsinks/mudsinks.
- Damage to horticulture and standing crops in some areas due to inundation.
- It may lead to riverine flooding in some river catchments (for riverine flooding please visit Web page of CWC)

### Action Suggested

- Check for traffic congestion on your route before leaving for your destination.
- Follow any traffic advisories that are issued in this regard.
- Avoid going to areas that face the water logging problems often.
- Avoid staying in vulnerable structure.

## Agromet advisories for likely impact of Heavy Rainfall

- In **Assam**, ensure proper drainage arrangements for quick removal of excess water from rice nurseries, jute, ginger, turmeric, vegetables, banana, citrus and papaya. Avoid nursery sowing of *Sali* rice and sowing of jute, maize and vegetables during heavy rainfall. Cover the already seeded area with natural mulching materials like straw, farm residues *etc.* Provide mechanical support to the sugarcane crop to prevent lodging.
- In **Meghalaya**, ensure proper drainage channels in rice nurseries, maize, ginger, cowpea, vegetable fields and banana plantations. Protect young seedlings from direct exposure to heavy rainfall. Use propping (bamboo or wooden poles) to support heavily laden plants.
- In **Nagaland**, delay transplanting of brinjal in main field. For already transplanted seedlings, maintain proper drainage in and around the fields of maize, vegetables and orchard.
- In **Manipur**, avoid transplanting of rice during heavy rainfall. Ensure proper drainage in soybean, chilli, ginger, turmeric, banana and other crop fields and newly transplanted seedlings and nursery crops to avoid water stagnation.
- In **Mizoram**, create drainage channels surrounding the rice fields and utilize grass mulch to cover the seeds. Provide support to fruit-bearing or partially lodge plants/trees. Propping should be done to prevent maize plants from lodging.
- In **Tripura**, ensure adequate drainage arrangements to remove excess water from rice and vegetable fields during heavy rainfall.
- In **Odisha**, avoid sowing of green gram during heavy rainfall. Make provision to drain out excess rain water from fields of rice, maize, millets and pulse crops and fruit orchards.
- In **Himachal Pradesh**, maintain proper drainage channels in fields of maize, finger millet and vegetables to prevent waterlogging.
- In **Uttarakhand**, ensure proper field drainage in fields of rice, maize, tomato, chilli, barnyard millet and finger millet to drain out excess rain water from the field.
- In **Madhya Pradesh**, harvest mature green gram, vegetables and fruits and store the produce in safe place.
- In **Chhattisgarh**, ensure proper drainage in nurseries of rice and vegetables.
- In **Gujarat**, drain out excess water from rice nursery; fields of sugarcane, okra, vegetables, yam and sapota orchards.

- In **Konkan**, postpone nursery sowing of rice, finger millet and vegetables. Postpone sowing of groundnut and cucurbitaceous vegetables and planting of new orchards like mango, coconut, cashewnut and arecanut. Drain out excess water from nurseries of rice and finger millet and fields of rice and vegetables.
- In *ghat* areas of **Madhya Maharashtra**, make arrangement to drain out excess water from nurseries of rice and finger millet.
- In **Vidarbha**, ensure proper drainage in vegetable nurseries and fruit orchards.
- In **Keralam**, drain out excess water from banana, coconut, cardamom, ginger, black pepper and vegetables. Provide staking support in banana plants and strengthen the pandals of vegetable crops. Avoid transplanting of rice during heavy rain.
- In **Karnataka**, ensure proper drainage in rice seedbeds, rice fields, arecanut and coconut fields and fruit orchards to prevent water stagnation.
- In the regions expecting heavy rainfall, including **Arunachal Pradesh, Jharkhand, West Bengal, Bihar, Punjab and Haryana, East Uttar Pradesh and East Rajasthan** withhold irrigation in standing crops, make necessary arrangements to remove excess rain water from the crop fields.

#### **Agromet advisories for likely impact of Thunderstorm / Gusty Winds**

- Shift the harvested produce in safer places or cover the produce with tarpaulin sheets in the fields. Tie the harvested crops securely and cover them to minimize the risk of displacement from strong surface winds.
- Provide mechanical support to horticultural crops and staking or support to vegetables and young fruit plants / fruit-bearing plants to avoid lodging due to strong winds.

#### **Livestock / Poultry / Fisheries**

- Keep the animals inside the shed during heavy rainfall and provide them balanced feed.
- Store the feed and fodder in a safe place to prevent spoilage.
- In regions with high temperatures and heat wave conditions, provide clean, cool drinking water to animals, and cover the roofs of poultry sheds with grass to reduce the adverse effects of heat.
- Construct an outlet with proper netting around the ponds to drain excess water, thereby preventing fish from escaping in the event of overflow.

#### **Flash Flood Guidance**

24 hours Outlook for the Flash Flood Risk (FFR) till 1130 IST of 07-07-2026 :

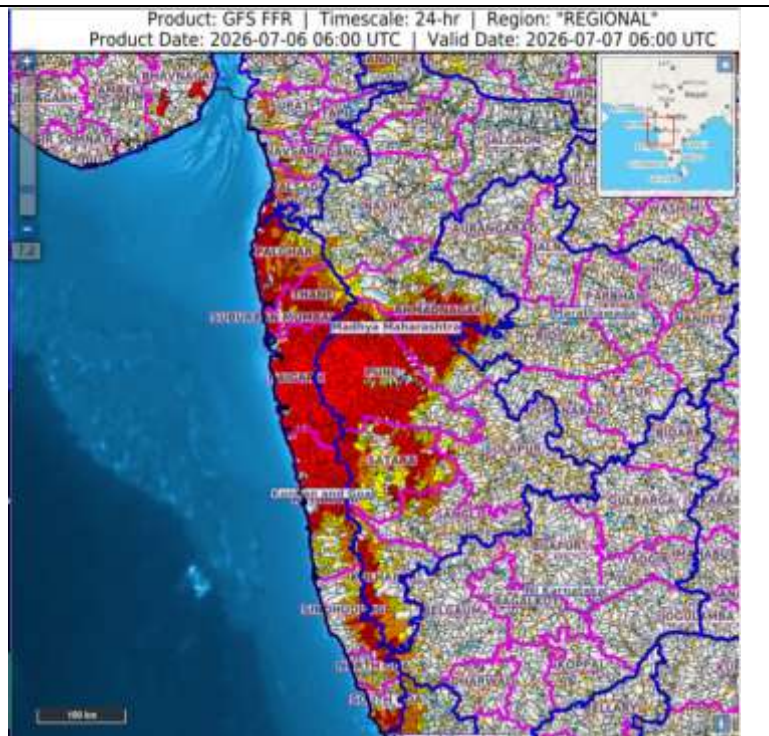
Moderate flash flood risk likely over few watersheds & neighbourhoods of following Met Sub-divisions during next 24 hours.

Konkan & Goa - Mumbai City, Palghar, Raigarh, Ratnagiri, Suburban Mumbai and Thane districts.

Madhya Maharashtra - Ahmadnagar, Kohlapur, Pune, Sangli and Satara districts.

Guajarat Region -Valsad, Navsari, Surat districts

Surface runoff/ Inundation may occur at some fully saturated soils & low-lying areas over Area of Concern (AoC) as shown in map due to expected rainfall occurrence in next 24 hours.



24 hours Outlook for the Flash Flood Risk (FFR) till 1130 IST of 07-07-2026 :

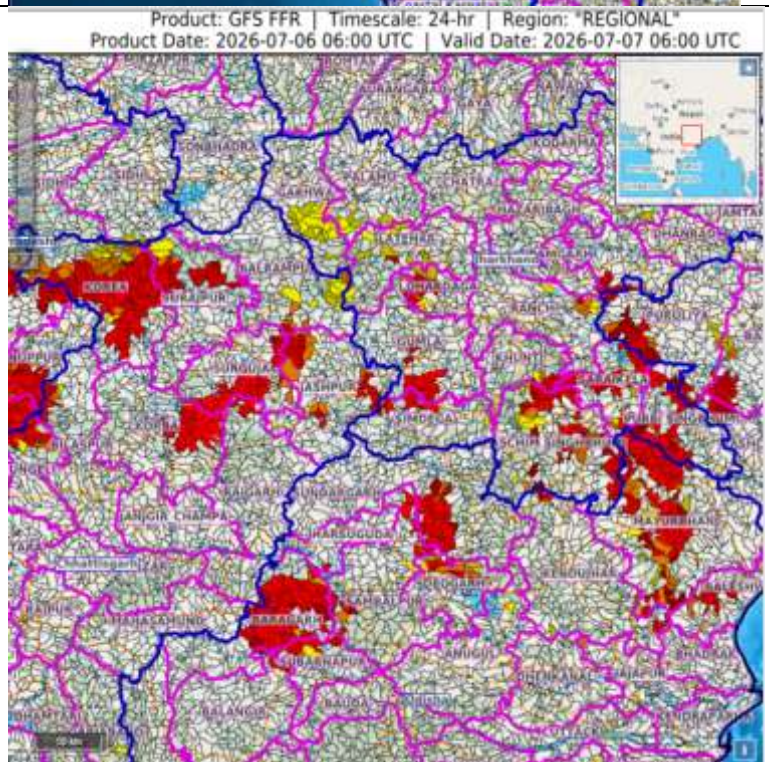
Low to Moderate flash flood risk likely over few watersheds & neighbourhoods of following Met Sub-divisions during next 24 hours.

Jharkhand- Purbi Singhbhum, Saraikela, Paschim Singhbhum, Khunti, Gumla, Simdega districts.

Chhattisgarh - Jashpur, Surguja, Surajpur, Korea, Korba, districts.

Odisha - Mayurbhanj, Sundargarh, Deogarh, Baragarh, Sambalpur districts.

Surface runoff/ Inundation may occur at some fully saturated soils & low-lying areas over Area of Concern (AoC) as shown in map due to expected rainfall occurrence in next 24 hours.



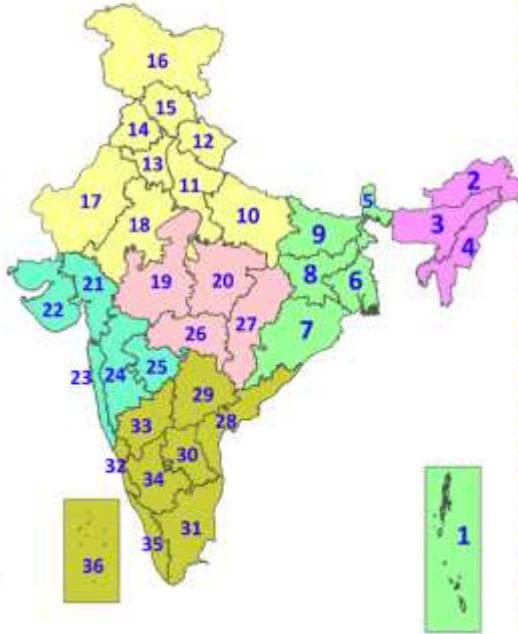
### Legends & abbreviations:

- ❖ **Heavy Rain:**64.5115.5mm; **Very Heavy Rain:**115.6204.4mm; **Extremely Heavy Rain:** >204.4mm.
- ❖ **Obsy:** Observatory; Automatic Weather Station; **ARG:** Automatic Rain Gauge; **dist:** District; **NH:** National Highway; **KVK:** Krishi Vigyan Kendra; **DVC:** Damodar Valley Corporation; **PTO:** Part Time Office, **Aero:** Aerodrome, **IAF:** Indian Air Force.
- ❖ **Region wise classification of meteorological Sub-Divisions:**
  - **Northwest India:** Western Himalayan Region (Jammu-Kashmir-Ladakh-Gilgit-Baltistan-Muzaffarabad, Himachal Pradesh and Uttarakhand); Punjab, Haryana Chandigarh & Delhi; West Uttar Pradesh, East Uttar Pradesh, West Rajasthan and East Rajasthan.
  - **Central India:** West Madhya Pradesh, East Madhya Pradesh, Vidarbha and Chhattisgarh.

- **East India:** Bihar, Jharkhand, Sub-Himalayan West Bengal & Sikkim; Gangetic West Bengal, Odisha and Andaman & Nicobar Islands.
- **Northeast India:** Arunachal Pradesh, Assam & Meghalaya and Nagaland, Manipur, Mizoram & Tripura.
- **West India:** Gujarat Region, Saurashtra & Kutch, Coastal Maharashtra (Konkan) & Goa, Madhya Maharashtra and Marathawada.
- **South India:** Coastal Andhra Pradesh & Yanam, Telangana, Rayalaseema, Coastal Karnataka, North Interior Karnataka, South Interior Karnataka, Kerala & Mahe, Tamil Nadu, Puducherry & Karaikal and Lakshadweep.

## LEGENDS

1. अंडमान और निकोबार द्वीपसमूह
2. अरुणाचल प्रदेश
3. असम और मेघालय
4. नागालैंड, मणिपुर, मिजोरम और त्रिपुरा
5. उप-हिमालयी पश्चिम बंगाल और सिक्किम
6. गंगीय पश्चिम बंगाल
7. ओडिशा
8. झारखंड
9. बिहार
10. पूर्वी उत्तर प्रदेश
11. पश्चिम उत्तर प्रदेश
12. उत्तराखंड
13. हरियाणा, चंडीगढ़ और दिल्ली
14. पंजाब
15. हिमाचल प्रदेश
16. जम्मू और कश्मीर और लद्दाख
17. पश्चिम राजस्थान
18. पूर्वी राजस्थान
19. पश्चिम मध्य प्रदेश
20. पूर्वी मध्य प्रदेश
21. गुजरात
22. सौराष्ट्र
23. कोंकण और गोवा
24. मध्य महाराष्ट्र
25. मराठवाड़ा
26. विदर्भ
27. छत्तीसगढ़
28. तटीय आंध्र प्रदेश और यनम
29. तेलंगाना
30. रायलसीमा
31. तमिलनाडु, पुडुचेरी और कराईकल
32. तटीय कर्नाटक
33. आंतरिक उत्तरी कर्नाटक
34. आंतरिक दक्षिणी कर्नाटक
35. केरल और माहे
36. लक्षद्वीप



1. Andaman & Nicobar Islands
2. Arunachal Pradesh
3. Assam & Meghalaya
4. Nagaland, Manipur, Mizoram & Tripura
5. Sub-Himalayan West Bengal & Sikkim
6. Gangetic West Bengal
7. Odisha
8. Jharkhand
9. Bihar
10. East Uttar Pradesh
11. West Uttar Pradesh
12. Uttarakhand
13. Haryana, Chandigarh & Delhi
14. Punjab
15. Himachal Pradesh
16. Jammu & Kashmir and Ladakh
17. West Rajasthan
18. East Rajasthan
19. West Madhya Pradesh
20. East Madhya Pradesh
21. Gujarat
22. Saurashtra
23. Konkan & Goa
24. Madhya Maharashtra
25. Marathwada
26. Vidarbha
27. Chhattisgarh
28. Coastal Andhra Pradesh & Yanam
29. Telangana
30. Rayalaseema
31. Tamilnadu, Puducherry & Karaikal
32. Coastal Karnataka
33. North Interior Karnataka
34. South Interior Karnataka
35. Kerala & Mahe
36. Lakshadweep

### SPATIAL DISTRIBUTION (% of Stations reporting)

% Stations	Category	% Stations	Category
76-100	Widespread (WS/Most Places)	26-50	Scattered (SCT/A Few Places)
51-75	Fairly Widespread (FWS/Many Places)	1-25	Isolated (ISOL)

- |                      |                      |              |
|----------------------|----------------------|--------------|
| Fog                  | Heavy Snow           | Cold Wave    |
| Heavy Rain           | Dust Storm           | Cold Day     |
| Very Heavy Rain      | Heat Wave            | Ground Frost |
| Extremely Heavy Rain | Warm Night           |              |
| Thunder & Lightning  | Hot Day              |              |
| Hailstorm            | Hot & Humid          |              |
| Dust Raising Winds   | Strong Surface Winds |              |

#### COLOUR CODED WARNING

- No Warning (No Action)
- Watch (Be Aware)
- Alert (Be Prepared To Take Action)
- Warning (Take Action)

#### Probabilistic Forecast

Terms	Probability of Occurrence (%)
Unlikely	< 25
Likely	25 - 50
Very Likely	50 - 75
Most Likely	> 75

\* Red colour warning does not mean "Red Alert". Red colour warning means "Take Action".  
Forecast and Warning for any day is valid from 0830 hours IST of day till 0830 hours IST of next day.  
For more details, kindly visit <https://mausam.imd.gov.in> or contact: 011-2434-4599  
(Service to the Nation since 1875)

### DEFINITION/CRITERIA

<b>Rain/ Snow *</b>	<p><b>Heavy:</b> 64.5 to 115.5 mm/cm *</p> <p><b>Very Heavy:</b> 115.6 to 204.4 mm/cm*</p> <p><b>Extremely Heavy:</b> &gt; 204.4 mm/cm *</p>
<b>Heat Wave</b>	<p>When maximum temperature of a station reaches <math>\geq 40^{\circ}\text{C}</math> for plains and <math>\geq 30^{\circ}\text{C}</math> for hilly regions</p> <p><b>(a) Based on Departure from normal</b></p> <p><b>Heat Wave:</b> Maximum Temperature Departure from normal <math>4.5^{\circ}\text{C}</math> to <math>6.4^{\circ}\text{C}</math>.</p> <p><b>Severe Heat Wave:</b> Maximum Temperature Departure from normal <math>\geq 6.5^{\circ}\text{C}</math></p> <p><b>(b). Based on Actual maximum temperature</b></p> <p><b>Heat Wave:</b> When actual maximum temperature <math>\geq 45^{\circ}\text{C}</math>.</p> <p><b>Severe Heat Wave:</b> When actual maximum temperature <math>\geq 47^{\circ}\text{C}</math></p> <p><b>( c). Criteria for heat wave for coastal stations</b></p> <p>When maximum temperature departure is <math>&gt;4.5^{\circ}\text{C}</math> from normal. Heat Wave may be described provided maximum temperature <math>\geq 37^{\circ}\text{C}</math></p>
<b>Warm Night</b>	<p><b>When maximum temperature remains <math>40^{\circ}\text{C}</math></b></p> <p><b>Warm Night:</b> When minimum temperature departure <math>4.5^{\circ}\text{C}</math> to <math>6.4^{\circ}\text{C}</math>.</p> <p><b>Severe Warm Night:</b> When minimum temperature departure <math>&gt;6.4^{\circ}\text{C}</math>.</p>
<b>Cold Wave</b>	<p>When minimum temperature of a station <math>\leq 10^{\circ}\text{C}</math> for plains and <math>\leq 0^{\circ}\text{C}</math> for hilly regions.</p> <p><b>(a). Based on departure</b></p> <p><b>Cold Wave:</b> Minimum Temperature Departure from normal <math>-4.5^{\circ}\text{C}</math> to <math>-6.4^{\circ}\text{C}</math>.</p> <p><b>Severe Cold Wave:</b> Minimum Temperature Departure from normal <math>\leq -6.5^{\circ}\text{C}</math></p> <p><b>(b) Based on actual Minimum Temperature (for Plains only)</b></p> <p><b>Cold Wave :</b> When Minimum Temperature is <math>\leq 4.0^{\circ}\text{C}</math></p> <p><b>Severe Cold Wave:</b> When Minimum Temperature is <math>\leq 2.0^{\circ}\text{C}</math></p> <p><b>( c) For Coastal Stations</b></p> <p>When Minimum Temperature departure is <math>\leq -4.5^{\circ}\text{C}</math> &amp; actual Minimum Temperature is <math>\leq 15^{\circ}\text{C}</math></p>
<b>Cold Day</b>	<p>When minimum temperature of a station <math>&lt; 10^{\circ}\text{C}</math> for plains and <math>\leq 0^{\circ}\text{C}</math> for hilly regions</p> <p><b>Based on departure</b></p> <p><b>Cold Day:</b> Maximum Temperature Departure from normal <math>-4.5^{\circ}\text{C}</math> to <math>-6.4^{\circ}\text{C}</math>.</p> <p><b>Severe Cold Day:</b> Maximum Temperature Departure from normal <math>\leq -6.5^{\circ}\text{C}</math></p>
<b>Fog</b>	<p><b>Phenomenon of small droplets suspended in air and the horizontal visibility <math>&lt; 1\text{km}</math></b></p> <p><b>Moderate Fog:</b> When the visibility between 500-200 metres</p> <p><b>Dense Fog:</b> when the visibility between 50- 200 metres</p> <p><b>Very Dense Fog:</b> when the visibility <math>&lt; 50</math> metres</p>
<b>Thunderstorm</b>	<p>Sudden electrical discharges manifested by a flash of light (Lightning) and a sharp rumbling sound (thunder)</p>
<b>Dust/Sand Storm</b>	<p>An ensemble of particles of dust or sand energetically lifted to great heights by a strong and turbulent wind.</p>
<b>Frost</b>	<p><b>Ice deposits on ground</b></p> <p>Air temperature <math>\leq 4^{\circ}\text{C}</math> ( over Plains)</p>
<b>Squall</b>	<p><b>A strong wind that rises suddenly, lasts for atleast 1 minute.</b></p> <p><b>Moderate:</b> Wind speed 52-61 kmph</p> <p><b>Severe:</b> Wind speed 62-67 kmph</p> <p><b>Very Severe:</b> Wind speed <math>&gt;67</math> kmph</p>
<b>Sea State</b>	<p><b>Effect of various waves in the sea over specific area</b></p> <p><b>Rough to very rough:</b> Wind speed 41-62 kmph (22-33 knots) &amp; Wave height 2.5-6 metre</p> <p><b>High to very high:</b> Wind speed 63-117 kmph ( 34-63 knots) &amp; Wave height 6-14 metre</p> <p><b>Phenomenal:</b> Wind speed <math>&gt;117</math> kmph (<math>&gt;63</math> knots) &amp; Wave height <math>&gt;14</math> metre</p>
<b>Cyclone</b>	<p><b>Cyclonic Storm:</b> Wind speed 62-87 kmph (34-47 knots)</p> <p><b>Severe Cyclonic Storm:</b> Wind speed 88-117 kmph (48-63 knots)</p> <p><b>Very Severe Cyclonic Storm:</b> Wind speed 118-165 kmph (64 - 89 knots)</p> <p><b>Extremely Severe Cyclonic Storm:</b> Wind speed 166-220 kmph (90 -119 knots)</p> <p><b>Super Cyclone Storm:</b> Wind speed <math>&gt;220</math> kmph (<math>&gt;119</math> knots)</p>

\* Red colour warning does not mean "Red Alert", Red colour warning means "Take Action".  
Forecast and Warning for any day is valid from 0830 hours IST of day till 0830 hours IST of next day.  
For more details, kindly visit <https://mausam.imd.gov.in> or contact: 011-2434-4599  
(Service to the Nation since 1875)